

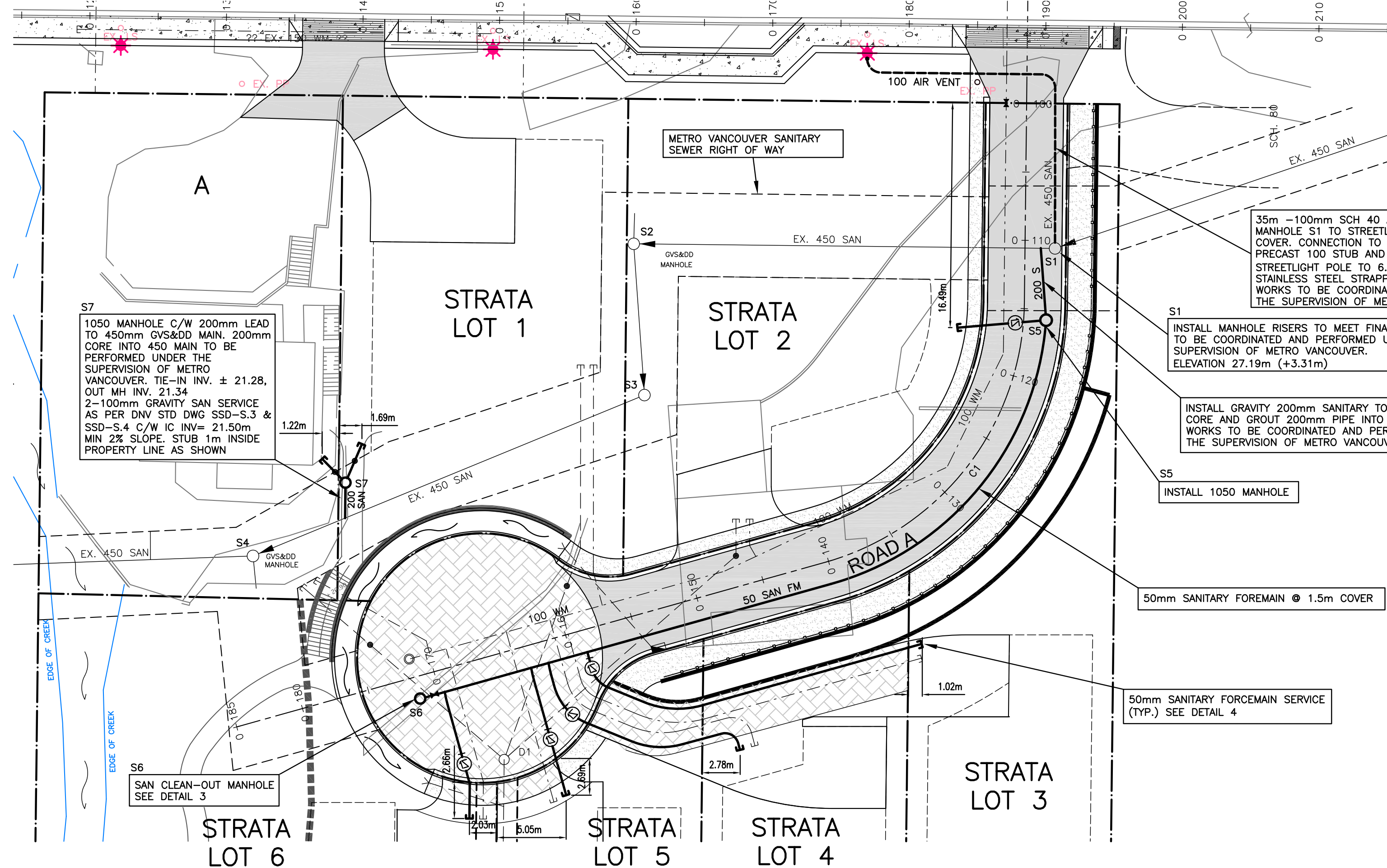
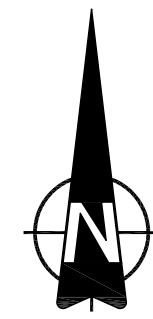
* LOTS 3-7 SANITARY TO BE PUMPED

BARNES SUBMERSIBLE GRINDER PUMP TO BE SERIES SGVF & SGVH 2HP, 3450RPM, 60 HZ HIGH-FLOW AND HIGH-HEAD INSTALLED BY OWNER DURING HOUSE CONSTRUCTION

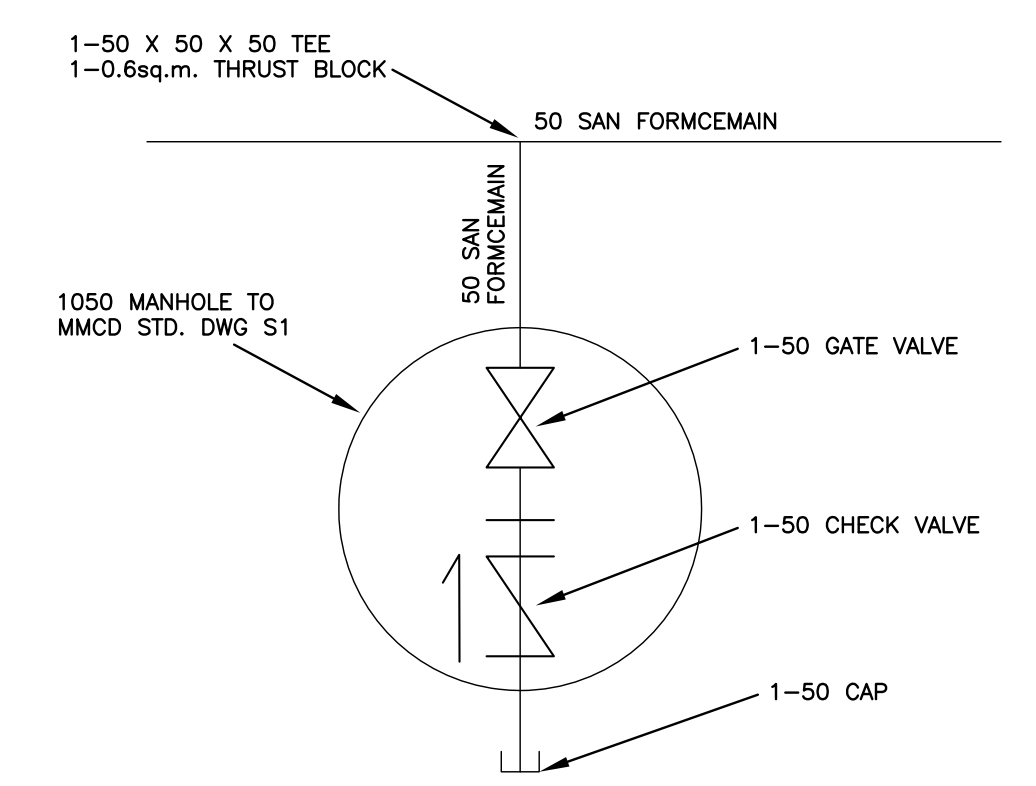
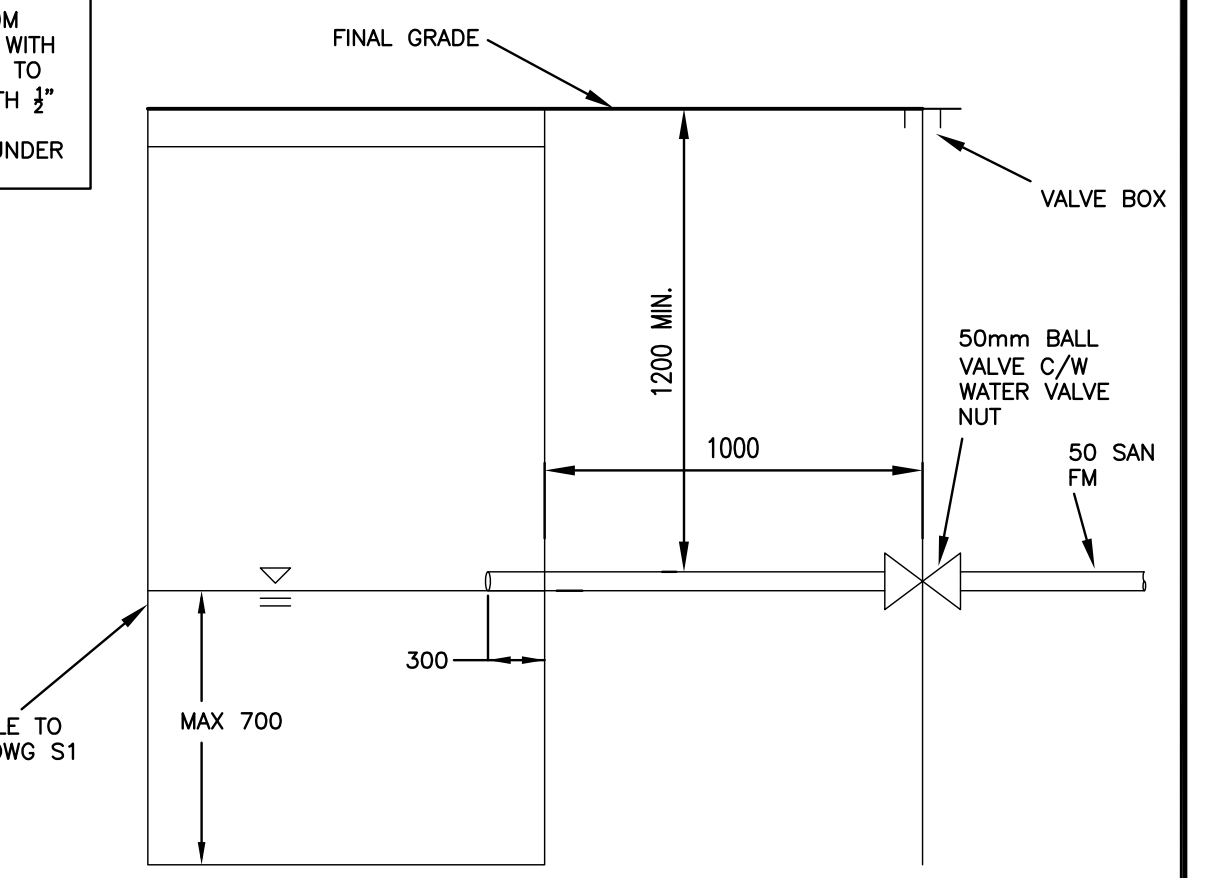
STORM AND SANITARY SEWER NOTES

- GRAVITY SANITARY SEWER MAINS TO BE DR35 PVC, MIN. PIPE STIFFNESS (F/Y) 320 kPa @ 5% DEFLECTION TO ASTM D2412, ASTM D3034 AND CSA B182.2. GASKETS TO ASTM F477.
- SANITARY FORCEMAIN TO BE PVC TO AWWA C900 CLASS 150 OR HIGH DENSITY POLYETHYLENE SERIES 100 (DR17) OR BETTER, TO ASTM F714-85 & ASTM D-1248-84.
- STORM SEWER MAINS TO BE DR35 PVC, MIN. PIPE STIFFNESS (F/Y) 320 kPa @ 5% DEFLECTION TO ASTM D2412, ASTM D3034 AND CSA B182.2. GASKETS TO ASTM F477 OR CONCRETE AND SHALL MEET THE ASTM C14 CLASS 3 SPECIFICATIONS FOR NON-REINFORCED PIPE. (FOR PIPES UP TO A MAXIMUM OF 900mm)
- SANITARY SERVICE CONNECTIONS TO BE 50mm DIA. PVC TO ASTM D2241 OR HIGH DENSITY POLYETHYLENE TO AWWA C906 C/W CHECK VALVE AT MAIN TIE-IN LOCATION.
- STORM SERVICE TO BE DR 28 P.V.C., 150mm MIN. Ø TO D.N.V. STANDARD DRAWINGS SSD-S.3 & SSD-S.4, C/W INSPECTION CHAMBER AT PROPERTY LINE.
- STORM AND SANITARY SERVICE CONNECTIONS TO BE MARKED WITH A 50mm x 100mm POST PAINTED GREEN AND RED RESPECTIVELY. THE BELL END AND CAP AT THE TERMINATION IS ALSO TO BE PAINTED GREEN AND RED TO SUIT.
- MINIMUM GRADE ON STORM SERVICE CONNECTIONS TO BE 2% UNLESS NOTED OTHERWISE.
- ALL MANHOLES TO BE MMCD STD S1 UNLESS NOTED OTHERWISE.

SANITARY COORDINATES		
M.H. #	NORTHING	EASTING
MH S1	1984.419	1955.076
MH S3	1973.679	1925.015
MH S4	1961.897	1896.353
MH S5	1979.162	1954.424
MH S6	1951.456	1908.594
MH S7	1967.265	1903.122

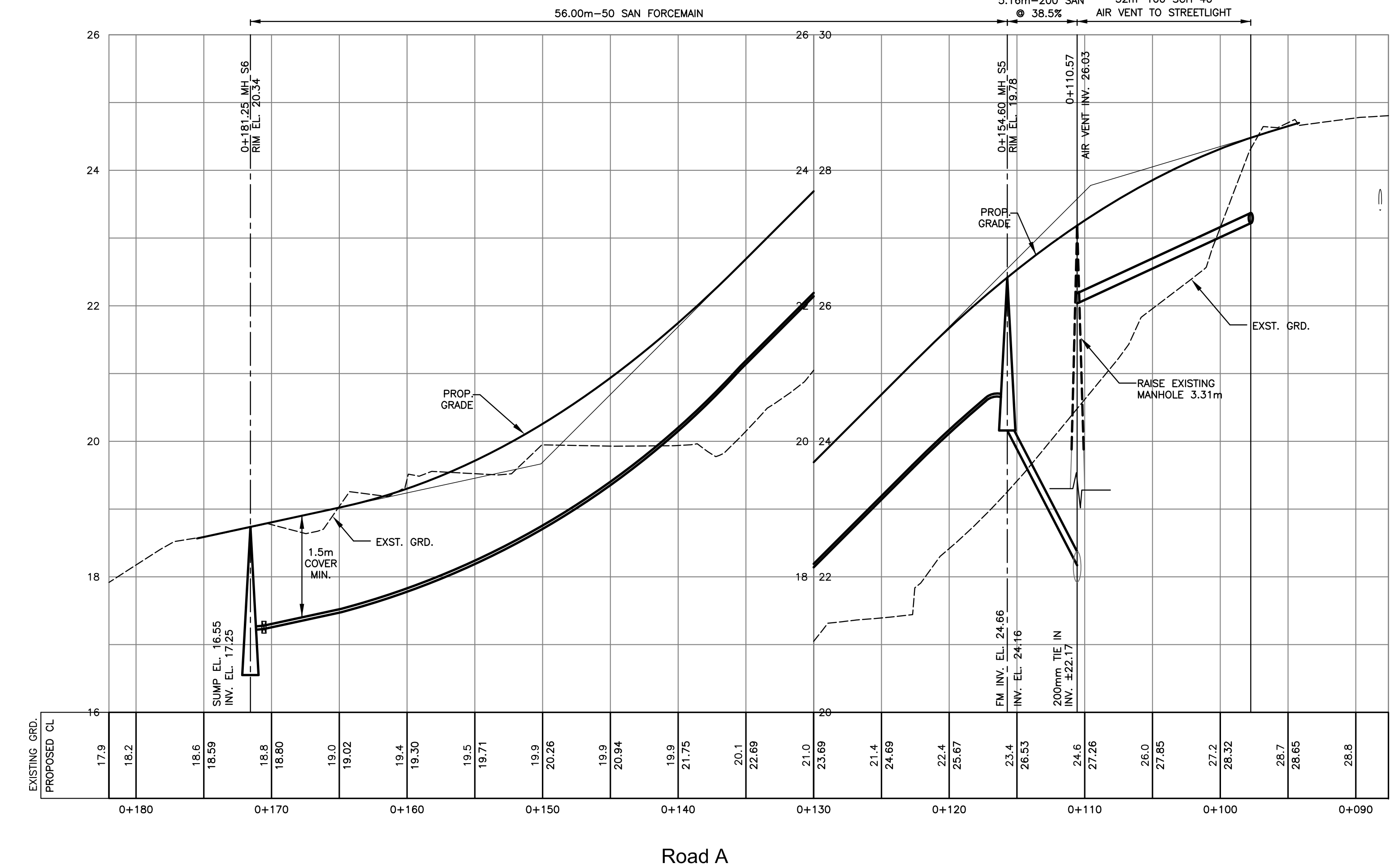


SEE DRAWING 3186-1 FOR GENERAL NOTES



CONTRACTOR TO VERIFY & LOCATE EXISTING MAINS & SERVICE CONNECTIONS & NOTIFY THE ENGINEER OF ANY DISCREPANCIES PRIOR TO BEGINNING CONSTRUCTION

SEE LANDSCAPE PLANS FOR LANDSCAPE DETAILS



no.		date	revision	chk'd	no.	date	revision	chk'd	client	NICK EBRAHIM		<p>PROFESSIONAL ENGINEERS 3745 DELBROOK AVENUE, NORTH VANCOUVER, B.C. V7N 3Z4 983-0458</p>	<p>COPYRIGHT RESERVED. THIS DRAWING AND DESIGN ARE AND AT ALL TIMES REMAIN THE EXCLUSIVE PROPERTY OF WEBSTER ENGINEERING LTD. AND CANNOT BE USED, REPRODUCED OR DISTRIBUTED WITHOUT WRITTEN CONSENT. © 2008 WEBSTER ENGINEERING LTD.</p>	approved	designed by	DKD	title	SANITARY SEWERS		scale	hor: 1:250	vert: 1:50
1		JUN.04.08	ISSUED FOR APPROVAL	DKD	project		3707 DOLLARTON HIGHWAY NORTH VANCOUVER, BRITISH COLUMBIA		checked by		FMC			file no.	3186		drawing no.	S-1	rev.	3		